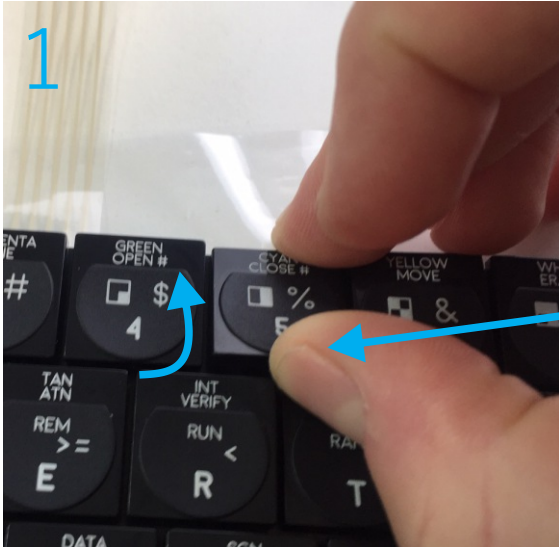


ZX Spectrum Next

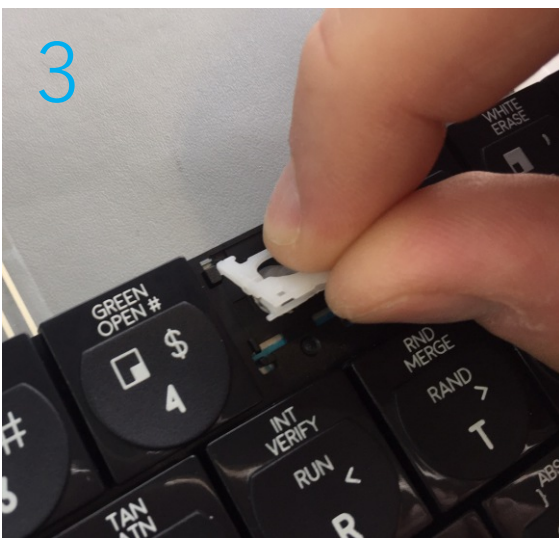
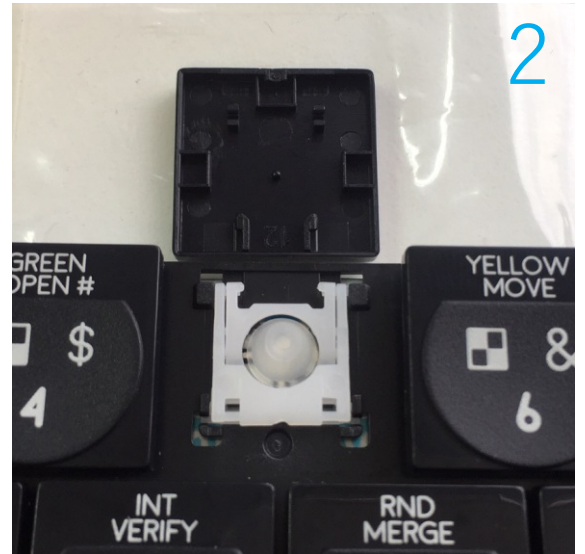
Maintenance - How to replace key mechanism
1x1 keycaps



Lift the front edge of the keycap, you may need to place one finger at the rear of the key to act as a lever while pulling upwards on the front edge of the keycap

The keycap will pop off at the front first as this is where the clips are that clip it to the keycap, then it can be just slid off of the rear sliders on the mechanism.

Note. If you look closely at the white mechanism you can see at the front there are clips and rear there are sliders. These parts both attach to the keycap.

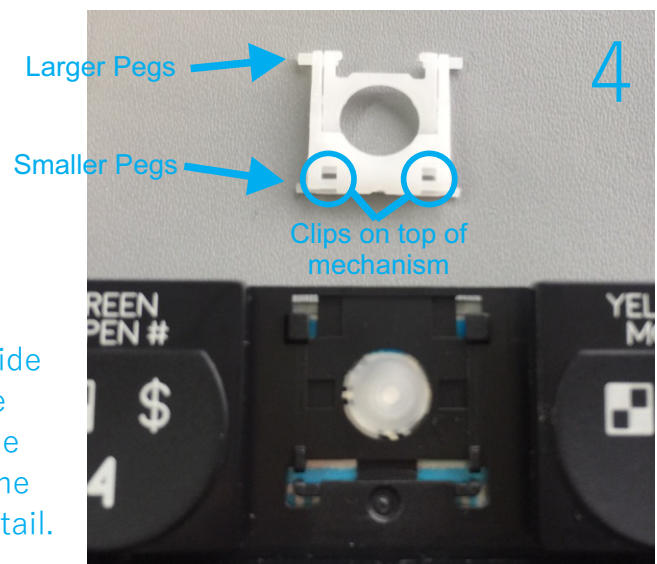


To remove the white mechanism this needs to be again lifted at the front edge of it. You can either do this by lifting with your finger at the front, or be using a thin flat bladed screwdriver / spudger from the side.

Note. Be careful if using a screwdriver not to slip and scratch the keyboard.

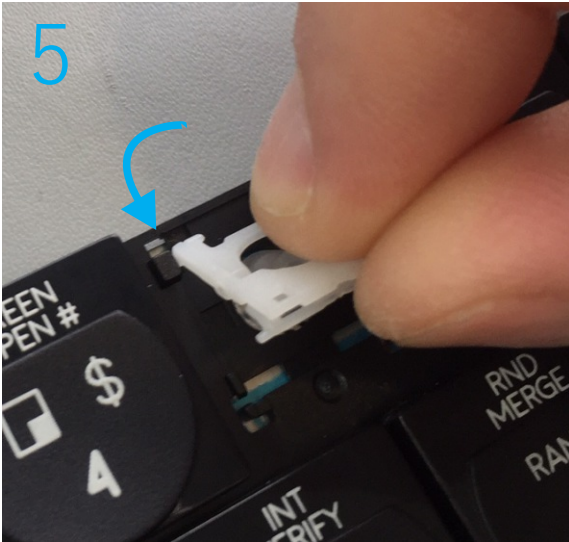
The keycap mechanism will now be removed. It would be good practice now to place your new mechanism in the correct orientation.

Note. The larger white pegs that stick out the side are at the rear edge and smaller pegs are at the front edge. The pegs are on the lower part of the mechanism. The clips are at the front edge of the mechanism face up. See next point for more detail.



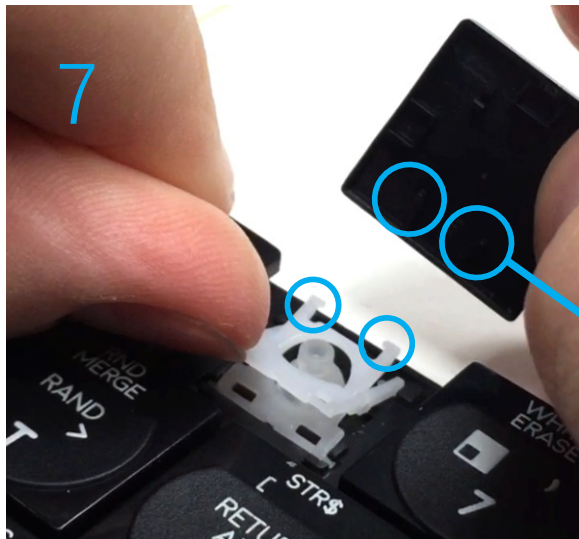
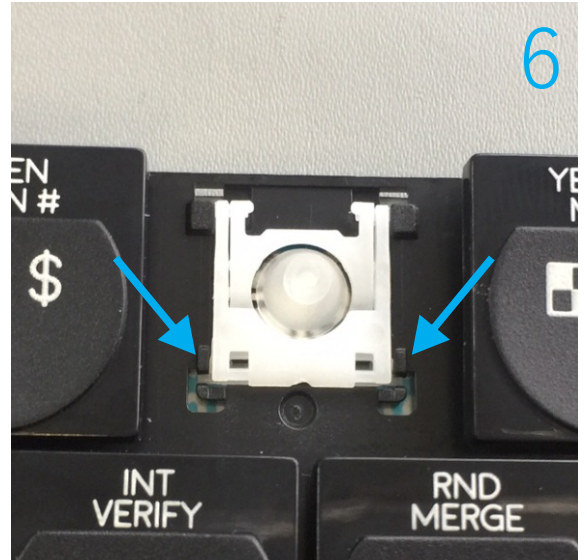
ZX Spectrum Next

Maintenance - How to replace key mechanism
1x1 keycaps



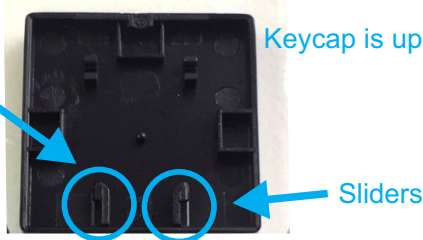
Slide the rear edge pegs into the slot on the keyboard tray. They should easily just slide in. You can then lower the front edge of the mechanism

Now ensure the front edge pegs are aligned with the 'socket' that is on the keyboard tray. You can now gently press on the front edge of the mechanism and it will click down into place.



Now lift the top section of the scissor at the front edge, please see the image for reference. The keycap can be now slid onto the two front inner pegs on the mechanism.

Note. The keycap has sliders that slide onto the pegs.

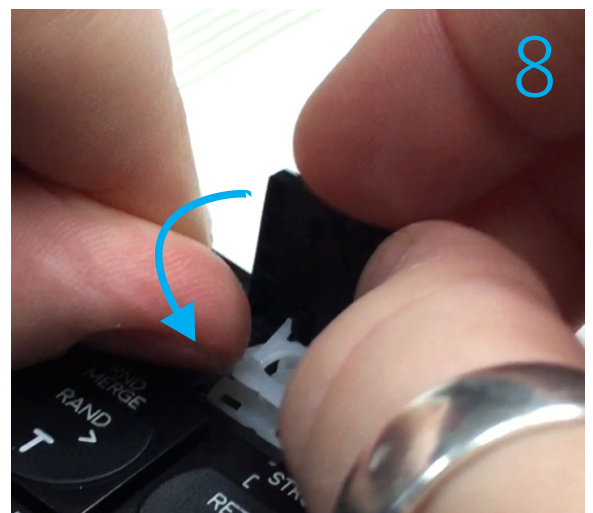


Keycap is upside down

Sliders

The keycap can now be hinged down (as it is fitted to the pegs on the previous step). Lower the keycap down to its correct central position and now press down gently. You will hear a click once it seats back in place.

Note. It would be good practice to press down along the complete front edge of the keycap to make sure it has clicked on to both of the clips correctly



ZX Spectrum Next

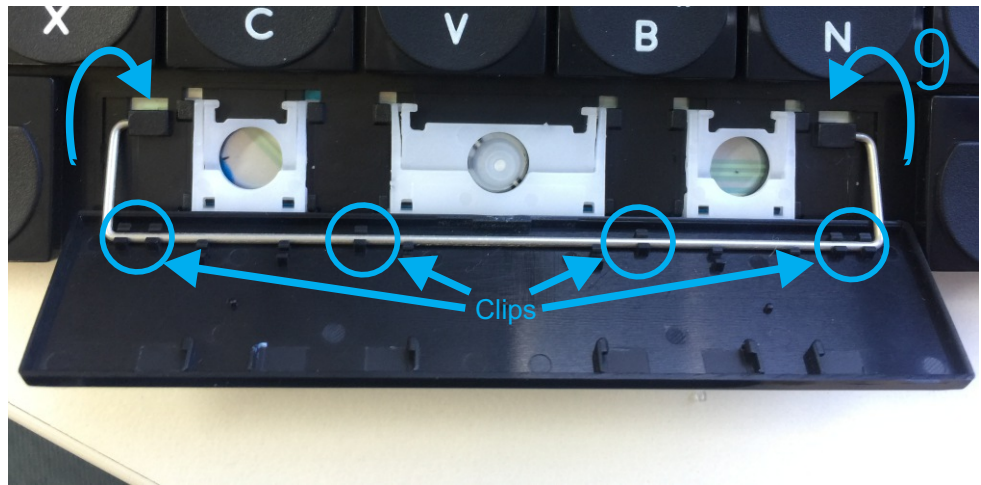
Maintenance - How to replace key mechanism Spacebar



Please refer to the earlier steps 1-6 on how to remove the 1x1 keycap and install the new white mechanisms. The process is much the same albeit with a longer key. The space bar would still need to be lifted from the front edge to remove it, please be careful to lever it evenly. **Note.** You should now have a keyboard that looks like the image.

Now hinge the metal levelling bar back that is on the rear of the space bar. This can then be hooked into the slots on the keyboard base and pulled forward so they are fully in.

Note. It would also be worth checking that the levelling bar is clicked into all the clips on the back of the space bar



Now hinge the spacebar back over to the correct orientation, press down gently and the rear edge and push it back so it sits slightly under the first row of keys. See image. You can now press this down at the rear edge of the space and then slide it forward towards the front of the keyboard. By doing so, this engages the hooks on the rear of the spacebar with the pegs on the mechanisms.

Please ensure the spacebar looks level and in the correct place, you can then press down gently at the front edge. You should hear a click as the clips click into the sockets on the back of the spacebar. On the spacebar there are clips all along the front edge (6 in total), so please apply pressure all the way along to ensure they are all clicked in.

Note. See image for the clip locations.

